

# FPL's Everglades Mitigation Bank

Florida Power & Light Company's Everglades Mitigation Bank is advancing wetland ecosystem restoration and protection of native species in Miami-Dade County.



## Largest privately funded Everglades restoration project

Adjacent to Turkey Point, FPL manages the single-largest privately funded Everglades restoration project, permanently protecting approximately 13,000 acres of historical Eastern Everglades wetlands. Drainage and flood control projects undertaken in the early 1900s dramatically altered the wetlands' physical and biological characteristics. FPL purchased the area in the 1970s and has been working for many years to restore them to their natural state.

With its large size and unique location, this protected property encompasses numerous diverse habitats, fostering a variety of wetland plants and animals.

## Seamless corridor for national parks

This area is a major component in creating the seamless corridor between Biscayne National Park and Everglades National Park. These environmentally sensitive lands are also key to the Comprehensive Everglades Restoration Program (CERP).

The mitigation bank allows private individuals and developers to participate in the restoration of one of the world's unique ecosystems by securing credits to offset unavoidable wetland impacts elsewhere.

For more information, visit: [www.fpl.com/evergladesmitigation](http://www.fpl.com/evergladesmitigation)



The Everglades Mitigation Bank is home to thousands of native flora and fauna.

## Habitat for animal species:

Approximately 400 crocodiles live on FPL property as well as other native animals including indigo snakes, bobcats, white-crowned pigeons, spoonbills, egrets and many others. As part of restoration activities, FPL created a five-acre crocodile sanctuary suitable for nesting habitat.

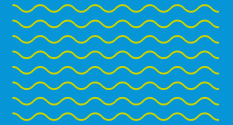
# Ongoing FPL Environmental Maintenance Activities & Benefits



FPL has redirected over **90,000-acre** feet of freshwater to the coast, which had previously been lost through water management discharges to sea

Re-established water sheet flow which has been lost for

**45 years**



when the adjacent levee was built in 1964 and it cut off all water flowing to the coast



Recent mitigation activities include the creation of **3 coastal tidal creeks**

These are designed to provide essential fish habitat and encourage seagrass growth. Additionally, FPL partnered with Miami-Dade County Public Works and Waste Management Department to conduct restoration activity along a County easement so that a roadway barrier impacting water flow could be removed and a ditch could be filled in to create additional freshwater wetlands

Restoration activities included the planting of over

**750,000** plants including

- sawgrass
- mangroves
- various native tree species



Work began in **1995**

with the removal of exotic and nuisance species and the replanting of native vegetation. Projects include enhancing degraded Everglades habitat, restoring historical freshwater flow to coastal areas and improving water quality

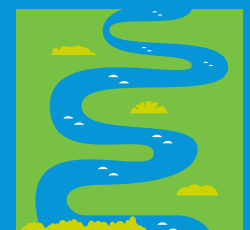
Installed over



**80**

water control structures

Restored **11 miles**



of roads and canals while creating both crocodile nesting habitat and coastal tidal creeks which support essential fish and shore bird habitat

The preservation area features **38 tree islands**

that are essential refuge for wildlife, four of them are new tree islands and 34 were restored

