



LED Lighting Solutions



Roadway Lighting | Area Lighting | Pendant Lighting | Post Top Lighting | Brackets, Bollards and Poles

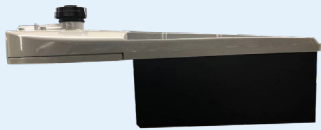
Safer. Smarter. More Vibrant Spaces.



FPL®

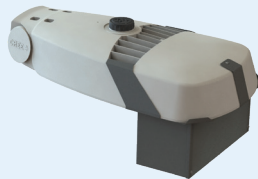
Roadway Lighting

Feel Safe, Drive Safe



Shield facing coastal line

Roadway – 5,000 Lumens
Turtle-friendly Amber



Shield facing coastal line

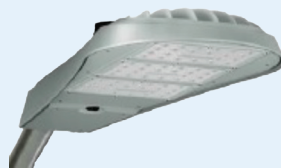
Roadway – 7,000 Lumens
Turtle-friendly Amber



Roadway – LED 5,000 Lumens
to 12,000 Lumens*



Roadway – LED 17,000
Lumens to 20,000 Lumens*



Roadway – LED 31,500 Lumens*








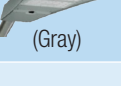


Available in
black or gray



Roadway – Modern*

**This is a non-representative image for the light.
Installations in the field may be different.*

ROADWAY LIGHTING

Manufacturer	Style	Fixture	Pole Options	Bracket Options	Light Pattern	Line Watts/ NEMA Label	Color Temp	Lumens	Glare Rating (BUG)	.ies File	Billing Tier					
Roadway	5,000 LUMEN Turtle Friendly	 (Gray or Black) shield facing coastal line	6, 7, 10	1, 2, 7, 8	3	108/110	594nM (Amber)	5,408 (no shield)	B1-U0-G2	Upon Request	G5					
								2,927 (rear shield)								
								1,878 (front shield)								
Roadway	7,000 LUMEN Turtle Friendly	 (Gray) shield facing coastal line	6, 7, 10	1, 2, 7, 8	3	144/140	594nM (Amber)	7,280 (no shield)	B1-U0-G2	PL17871-001A RSWX9024& WITH_ NO SHIELDING AID FNRPT.IES	J4					
								4,803 (rear shield)		PL17897-001A RSWX9024& W_ FRONT+SIDE SHIELD AID FNRPT.IES						
								2,936 (front shield)		PL17871-003A RSWX9024& W_ BACK&SIDE SHIELD AID FNRPT.IES						
Roadway	5,000 LUMEN Roadway	 (Gray)	6, 7, 10	1, 2, 7, 8	3	42/40	3000K	5,000+	B1-U0-G1	Upon Request	C2					
	42/40					4000K	5,000+	B1-U0-G2	C2							
	7,500 LUMEN Roadway	 (Gray)				59/60	3000K	7,500+	B1-U0-G1		D2					
	59/60					4000K	7,500+	B1-U0-G2	D2							
	12,000 LUMEN Roadway	 (Gray)				93/90	3000K	12,000+	B2-U0-G3		F2					
	93/90					4000K	12,000+	B2-U0-G3	F2							
	17,000 LUMEN Roadway	 (Gray)				127/130	3000K	17,000+	B3-U0-G3		I2					
	127/130					4000K	17,000+	B2-U0-G3	I2							
	20,000 LUMEN Roadway	 (Gray)				161/160	3000K	20,000+	B3-U0-G4		K3					
	161/160					4000K	20,000+	B3-U0-G4	K3							
31,500 LUMEN Roadway	 (Gray)	263/260	3000K	31,500+	B3-U0-G5	Q3										
263/260		4000K	31,500+	B3-U0-G5	Q3											
Roadway	Modern	 (Gray)	1, 6, 7, 9, 10	1, 2, 7, 8	4	121/120	3000K	16,427	B2-U0-G3	Upon Request	H3					
						121/120	4000K	17,125	B2-U0-G3		H3					
						186/190	3000K	24,937	B3-U0-G4		L3					
						186/190	4000K	25,839	B3-U0-G4		L3					
						264/260	3000K	32,450	B3-U0-G5		Q3					
						264/260	4000K	33,910	B3-U0-G5		Q3					
			 (Black)	6, 7, 10 2, 4, 8, 9*	1, 8 2, 7	4	121/120	4000K	17,125	B2-U0-G3	Upon Request	H3				
							186/190	4000K	25,839	B3-U0-G4		L3				
							264/260	4000K	33,910	B3-U0-G5		Q4				
							6, 7, 10 2, 4, 8, 9*	1, 8 2, 7	4	121/120		4000K	17,125	B2-U0-G3	Upon Request	H3
							186/190	4000K		25,839		B3-U0-G4	L3			
							264/260	4000K		33,910		B3-U0-G5	Q4			

Note: All roadway fixtures are grey unless otherwise noted



FPL®

Area Lighting

Inspiring Illumination



Area - Slipfitter*



Available in black
or bronze

Area - 7500 to 65000 Lumens



Flood - 15,000 Lumens*



Flood - 26,000 Lumens*



Flood - 48,000 Lumens*

**This is a non-representative image for the light.
Installations in the field may be different.*

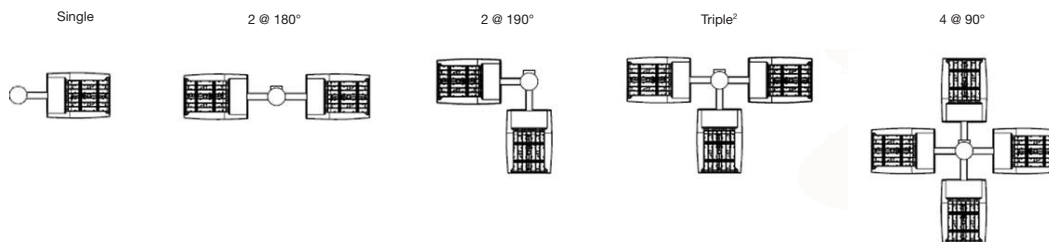
AREA LIGHTING

Manufacturer	Style	Fixture	Pole Options	Bracket Options	Light Pattern	Line Watts/ NEMA Label	Color Temp	Lumens	Glare Rating (BUG)	ies File	Billing Tier
Area Light	Slipfitter	 (Gray)	1, 6, 7, 9	1, 7	5	295/300	4000K	36,750	B5-U0-G4	Upon Request	S3
Area Light	7,500 Lumen Area	 (Black or Bronze)	1*, 2*, 8*, 9	6	4	59/60	4000K	7,500+	B2-U0-G2	Upon Request	D3
	17,500 Lumen Area					127/130	4000K	17,500+	B3-U0-G3		I3
	30,000 Lumen Area					246/245	4000K	30,000+	B3-U0-G5		P4
	50,000 Lumen Area					449/450	4000K	50,000+	B4-U0-G4		BB5
	65,000 Lumen Area					560/560	4000K	65,000+	B5-U0-G5		EE5
Flood	15,000 Lumen Floodlight		6, 7	24" stand-off (2DS)	6x6	110/110	4000K	15,000+	N/A	Upon Request	G3
	26,000 Lumen Floodlight					195/195	4000K	26,000+	N/A		M3
	48,000 Lumen Floodlight					348/350	4000K	48,000+	N/A		V4

1* ONLY the 59/60 watt 7,500 lumen light can be installed on the 20' (13' MH) Type 1 pole
All can be installed on the 35' (27'6" MH) Type 1 pole

2* & 8* ONLY the 59/60 watt 7,500 lumen light can be installed on the 14'6" and 21' Type 2 & 8 poles.
All can be installed on the 33' (24' MH) Type 8 pole.

*Area configurations



Note: Glare (BUG) Ratings for UFLD are measured at 0° tilt.



FPL®

Pendant Lighting

Functional Can Be Beautiful



Holophane – Bern



Teardrop – With Deep Skirt



Teardrop

Turtle-friendly amber



Holophane – Bern



King – Harbor Side K366

PENDANT LIGHTING

Manufacturer	Style	Fixture	Pole Options	Bracket Options	Light Pattern	Line Watts/ NEMA Label	Color Temp	Lumens	Glare Rating (BUG)	.ies File	Billing Tier
Holophane	Bern		3, 4, 6, 7	2, 3, 8 (black) and 9	3	58/60	4000K	7,609	B1-U0-G1	GBLF3_P30_40K_ASY_BK_RFD327869.ies	D10
		 (Turtle-friendly amber)	3, 4, 6, 7	2, 3, 8 (black) and 9	3	57/60	Amber	1,995 (no shield)	B1-U0-G0	Upon Request	D10
						1,434 (rear shield)					
				816 (front shield)							
Teardrop	Teardrop w/deep skirt	 (Black)	3, 4, 6, 7	2, 3, 8 (black) and 9	3	144/140	3000K	13,716	B2-U0-G1	Upon Request	J9
						144/140	4000K	13,969	B3-U0-G3		J9
						242/240	3000K	29,509	B3-U0-G2		O10
	Teardrop	 (Black)	3, 4, 6, 7	2, 3, 8 (black) and 9	3	144/140	3000K	17,516	B3-U2-G2	Upon Request	J9
						144/140	4000K	19,102	B2-U3-G4		J9
						242/240	3000K	29,509	B3-U0-G2		O9
King	Harbor Side K366		3, 4, 6, 7	2, 3, 8 (black) and 9	3	50/50	3000K	5,646	B2-U2-G2	0366PP4AC3X05030XXE(1).ies	D8
						90/90	3000K	9,291	B2-U3-G2	0366PP4AC3X09030XXE(1).ies	F8



FPL®

Post Top Lighting

Making a Great First Impression



AEL – Contemporary (Contempo)



Cooper – Arbor



Cooper – Mesa



Current – EPTC



Post Top – Traditional Without/ Side Panels



Post Top – Traditional W/Side Panels



Available in black or green

Post Top – Acorn



King – Victorian (No Lens)



King – Vizcaya (No Lens)

POST TOP LIGHTING (Page 1 of 2)

Manufacturer	Style	Fixture	Pole Options	Bracket Options	Light Pattern	Line Watts/ NEMA Label	Color Temp	Lumens	Glare Rating (BUG)	.ies File	Billing Tier
AEL	Contemporary (Contempo)	 (Gray)	1 (20'), 2, 8	NA	3	38/40	3000K	3,358	B1-U3-G2	245L_P30_XX_30K_R3_RNA_FPD95.ies	C2
						72/70	3000K	6,385	B2-U3-G2	245L_P55_XX_30K_R3_RNA_FPD95_SPECIAL.ies	E3
						38/40	4000K	3,615	B1-U3-G2	245L_P30_XX_40K_R3_RNA_FPD95.ies	C2
						72/70	4000K	6,874	B2-U3-G2	245L_P55_XX_40K_R3_RNA_FPD95_SPECIAL.ies	E3
Cooper	Arbor		1 (20'), 2**, 5, 8	NA or 4,5	3	48	3000K	4,173	B1-U0-G2	ARB-B2-LED-D1-T3-7030	D6
						48	4000K	4,534	B1-U0-G2	ARB-B2-LED-D1-T3-7040	D6
						99	3000K	7,779	B2-U0-G3	ARB-B3-LED-D1-T3-7030	G6
						99	4000K	8,451	B2-U0-G3	ARB-B3-LED-D1-T3-7040	G6
	Mesa	 (Black)	1 (20'), 2**, 5, 8, 9	NA or 4,5	3	75/80	4000K	9,017	B2-U0-G2	PMMSA2A740UT3-75W	E5
						150/150	4000K	17,958	B3-U0-G3	PMMSA4A740UT3-150W	J6
						5	258	4000K	28,336	B5 U0 G4	PMMSA4D740U5WQ-258W
Current	EPTC	 (Black)	1 (20'), 2, 8	NA or 4,5	3	65/70	4000K	7,300	B3-U0-G1	EPTC02_07B40_____.ies	E4
Post Top	Traditional No Side Panels	 (Black)	1 (20'), 2, 8	NA or 4,5	3	39/40	3000K	4,300	B1-U0-G2	Upon Request	C3
						39/40	4000K	4,500	B1-U0-G2		C3
						73/70	3000K	7,650	B2-U0-G2		E3
						73/70	4000K	7,970	B2-U0-G2		E3
	Traditional W/Side Panels	 (Black)	1 (20'), 2, 8	NA or 4,5	3	39/40	3000K	3,840	B1-U3-G3	Upon Request	C3
						39/40	4000K	4,000	B1-U3-G3		C3
						73/70	3000K	7,010	B2-U4-G3		E3
						73/70	4000K	7,300	B2-U4-G3		E3

*Also available in double bracket configuration

**New construction only

POST TOP LIGHTING (Page 2 of 2)

Manufacturer	Style	Fixture	Pole Options	Bracket Options	Light Pattern	Line Watts/ NEMA Label	Color Temp	Lumens	Glare Rating (BUG)	.ies File	Billing Tier
Post Top	Acorn	 Black/Black	1, 5, 2, 8*	NA or 4,5	3	39/40	3000K	5,190	B2-U4-G5	Upon Request	C5
						39/40	4000K	5,286	B2-U4-G5		C5
						60/60	3000K	7,811	B2-U4-G5		E5
						60/60	4000K	7,956	B2-U4-G5		E5
	Acorn	 Green/Green	1, 5	NA or 4	3	39/40	3000K	5,190	B2-U4-G5	Upon Request	C5
						60/60	3000K	7,811	B2-U4-G5		E5
King	Victorian (No lens)		1, 2, 5, 8	NA	3	60	3000K	4,598	B1-U0-G1	0056TP4NL3X06030XXE.ies	E6
						100	3000K	6,731	B2-U0-G2	0056TP4NL3X10030XXE.ies	G6
	Vizcaya (No lens)		1, 2, 5, 8	N/A or 4, 5	3	40	3000K	4,190	B1-U0-G1	0100WP4NG3X04030XXE.ies	C5
						60	3000K	5,986	B2-U0-G2	0100WP4NG3X06030XXE.ies	E5

*Also available in double bracket configuration

**New construction only



FPL®

Bollards

Illuminate pathways and landscapes

BOLLARDS

1	Manufacturer	
	Stresscrete	
	Style	
	Concrete Lighted Bollard	
	Type	
	Standard Walkway	
	Color Temp	
	3000k	
	Lumens	
	1602	



Bracket and Poles

Discover a New Road to Efficiency

BRACKETS



1

Roadway Style

2', 4', 6', 8', 10', 12'
Side Mounted

Color

Natural or Black



2

Roadway Style

4', 6', 8'
Tenon Mounted

Color

Natural or Black



3

Decorative Style

6' Single or Dual
Tenon Mounted

Color

Black



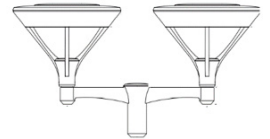
4

Decorative Style

Dual
Tenon Mounted

Color

Black or Green



5

Decorative Style

Dual
Tenon Mounted

Color

Black



6

Area Light Style

Bolt-on Adapter
Tenon Mounted

Color

Black or Bronze



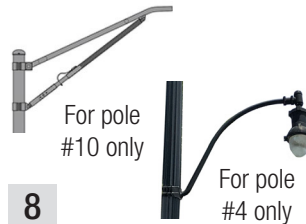
7

Area Light Style

Spoke
Tenon Mounted

Color

Black, Bronze or Gray



8

For pole
#10 only

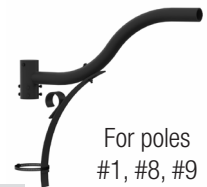
For pole
#4 only

Roadway Style

Single
Clamp Mounted

Color

Natural or Black



9

For poles
#1, #8, #9
only

Roadway Style

Single
Tenon Mounted

Color

Black

POLES

Standard Concrete



1

Tenon Mount
20' (13' MH)
35' (27'6" MH)

Standard Black Fiberglass



2

Tenon Mount
14' (10' MH)
21' (15'6" MH)

Black Washington Concrete



3

Tenon Mount
23' (16' MH)

Black Octagonal Concrete



4

Tenon Mount
37' (30' MH)

Black or Green Washington Concrete



5

Tenon Mount
18.5' (14'6" MH)

Standard Wood



6

Side Mount
35' (29' MH)
40' (33'6" MH)
45' (38" MH)

Standard Concrete



7

Side Mount
30' (22'6" MH)
35' (27'6" MH)
40' (30" MH)
45' (35' MH)

Black Tapered Concrete



8

Tenon Mount
14'6" (10' MH)
21' (15'6" MH)
33' (24' MH)

Grey or Black Round Concrete Pole on Concrete Base
(Non-roadway Only)



9

Tenon Mount
22' pole
25' MH

Unfinished Round Tapered Concrete



10

Side Mount
28' pole
35' MH
(For use with bracket 8 only)

Smart Pole Concrete



11

Side Mount
49' & 43'

*MH = Approximate Mounting Height