

# How we prepare for storm season

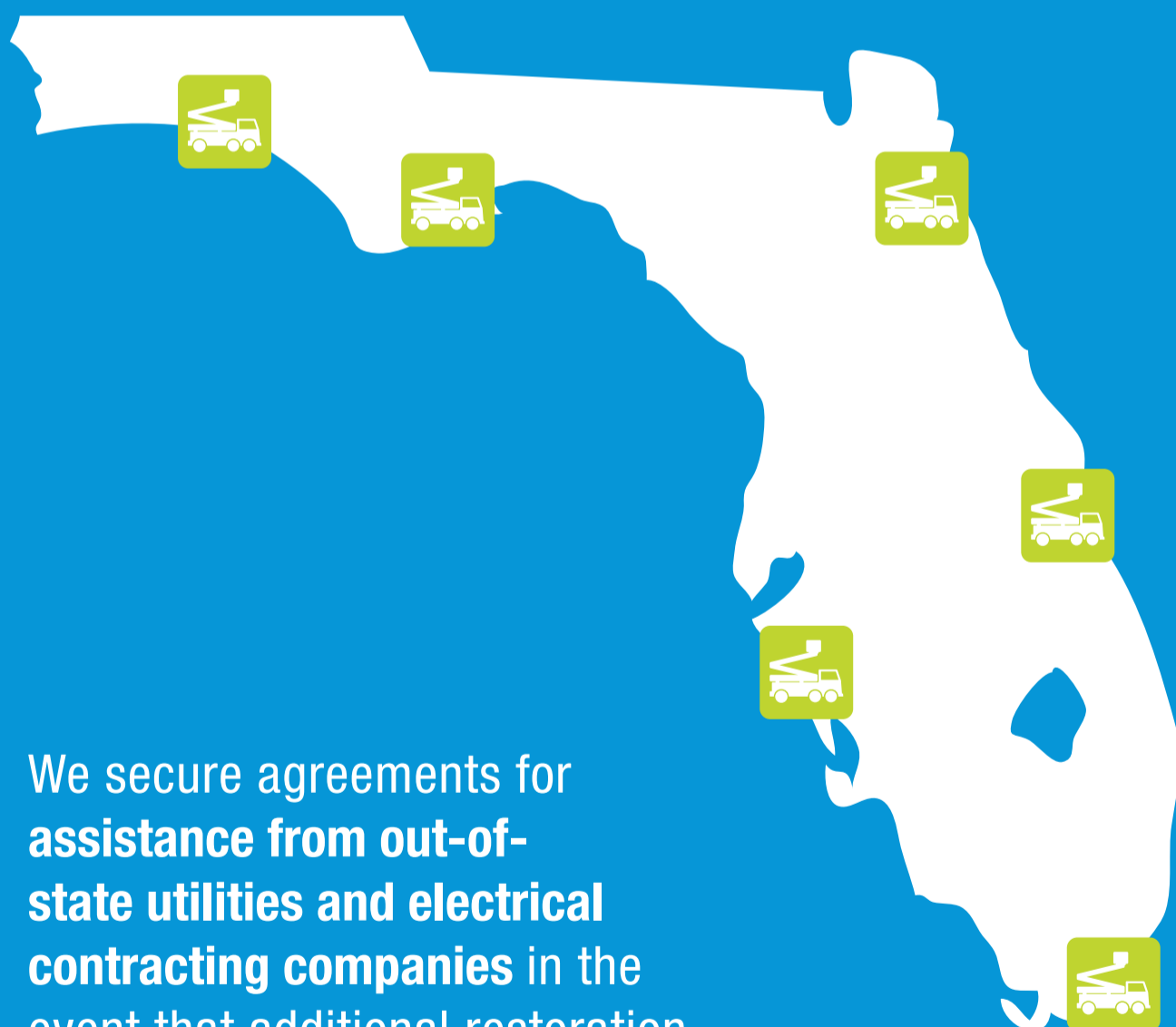
Be prepared: [FPL.com/storm](https://www.fpl.com/storm)

**Safety is always FPL's first priority. We urge customers to make it their top priority, too.**

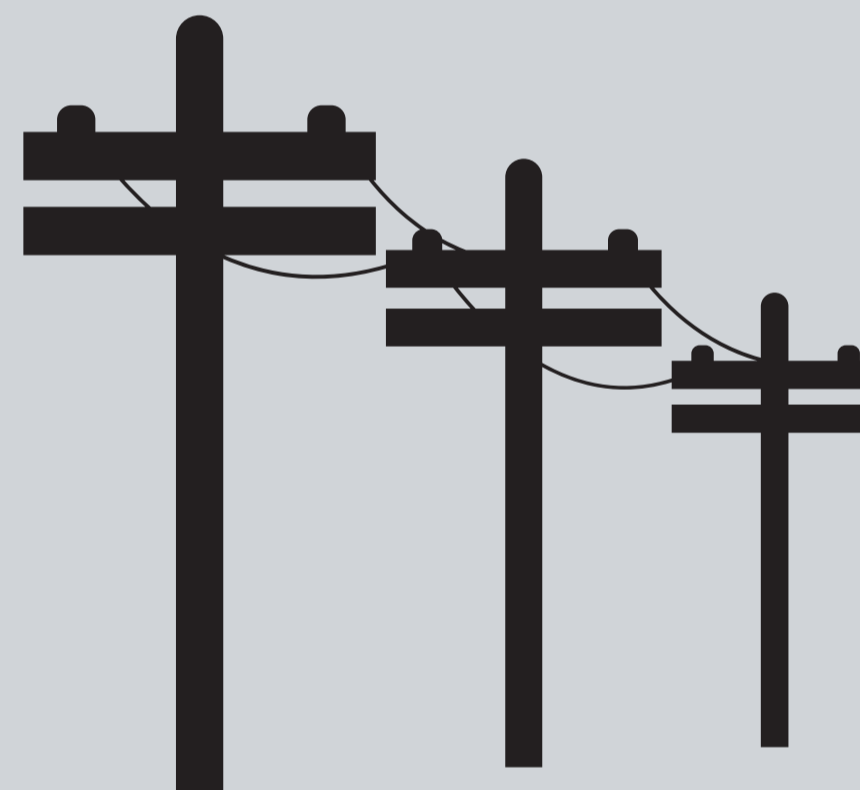


Prior to storm season, we **conduct extensive training to prepare our employees** to respond safely and as quickly as possible if a storm threatens our service area.

We work closely with local emergency officials to update lists of facilities that are critical to the community, such as hospitals, police and fire stations, communication facilities, water treatment plants and transportation providers.



We secure agreements for **assistance from out-of-state utilities and electrical contracting companies** in the event that additional restoration personnel are needed. We also order **backup supplies and equipment**, and we plan staging sites throughout our 35-county service area.



We also prepare and strengthen our infrastructure throughout the year by:

- » **Clearing** tree limbs and branches from power lines.
- » **Inspecting** poles for strength.
- » **Upgrading** poles from wood to concrete or steel.
- » **Inspecting** power lines and equipment with infrared technology to detect issues the naked eye can't see and making any needed repairs.